



www.IetLtd.com Proudly serving laboratories worldwide since 1979

CALL +847.913.0777 for Refurbished & Certified Lab Equipment

ASX-520 Family

Random Access Intelligent Autosamplers



With well over 10,000 systems operating in laboratories worldwide, the ASX-520 family of autosamplers has become known as the work horse in many industries and laboratories. The simple design allows for endless operation and unprecedented performance. These autosamplers are ideal for a wide range of analytical techniques including AA, ICP, ICPMS, TOC, UV-VIS, fraction collection, liquid handling, and more.

SIMPLE

Easy Set-Up and Operation: Out-of-the-box set-up allows a fully operational system the day of delivery.

Internet Accessible Firmware: Instant access to the latest downloadable firmware updates.

ROBUST

Corrosion Resistant: Sealed electronics chassis, conformal coated electronic boards and coated main driver screw protect against the harshest of chemical environments.

Superior Material Construction: Inert, metal-free PTFE liquid flow path decreases sample contamination risk and prolongs the life of the instrument.

Motor Torque: Powerful X, Y, Z axis movement resists effects of environmental buildup.

ACCURATE

Never Misses a Vial: Precision engineered automated sample probe arm and stationary sample racks virtually eliminate errors.

Auto-Zero Feature: Intelligent sample probe re-homing ensures accurate and repeatable probe positioning.

Integrated Rinse Station: Continuous flow sample probe rinse station with peristaltic pump minimizes sample contamination and carryover.

ADAPTABLE

Portable: Over 75 host instrument interfaces from 35 manufacturers enable multiple applications in a single lab.

Flexible Rack Configuration: Five different available rack sizes from 90 x 7 mL to 21 x 50 mL. Compatible with other standard market, ready-made sample racks. Customized racks made to customer specifications.

Technical Specifications

Speed

Axis	Min	Max
X	70 mm/sec	370 mm/sec
Y	70 mm/sec	340 mm/sec
Z	70 mm/sec	430 mm/sec

Autosampler Control Utility

SpeedShift* configuration tool for control of axis and rinse pump speeds

*Applies to non-"fixed time move" version autosamplers

Communication Interface

2 Serial (RS-232) ports;
USB (virtual COM port);
5 auxiliary inputs / 5 outputs

Power Requirements: 100-240 VAC, 47-63 Hz, 1.9A

Options

Clean Enclosure (ENC-500);
Offline Sample Dilutor (SDS-550);
Online AutoDilutor (ADX-500);
ASXPRESS™ PLUS Rapid Sample Introduction System

Technical Specifications

ASX-130 Compact Autosampler



Height 61 cm (24")

Width 33 cm (13")

Depth 33 cm (13")

Weight 8.4 kg (18.5 lbs)

X-Axis 22.2 cm (8.75")

Y-Axis 12.7 cm (5.0")

*allow additional space for cables

ASX-260 Versatile Autosampler



Height 61 cm (24")

Width 33 cm (13")

Depth 50.8 cm (20")

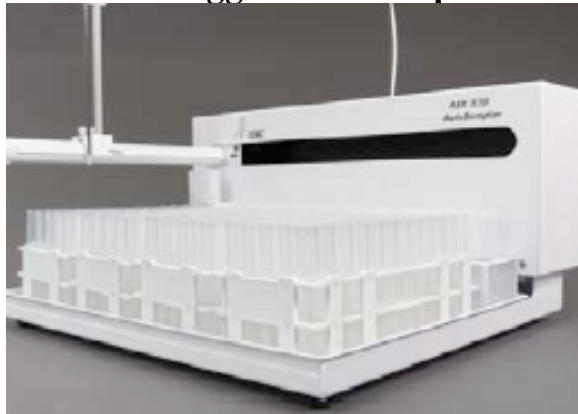
Weight 8.4 kg (18.5 lbs)

X-Axis 22.2 cm (8.75")

Y-Axis 29.0 cm (11.4")

*allow additional space for cables

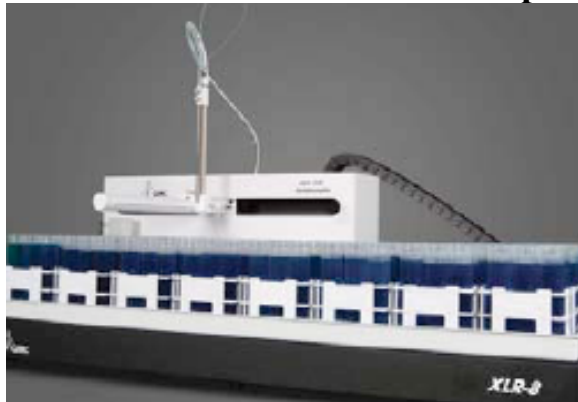
ASX-520 Rugged Autosampler



Height 61 cm (24")

Width 52 cm (20 1/2")
Depth 48.2 cm (19")
Weight 10.5 kg (23 lbs)
X-Axis 40.9 cm (16.1")
Y-Axis 27.0 cm (10.6")
*allow additional space for cables

XLR-8 Extended Rack Autosampler



Height 66 cm (26")
Width 100 cm (39")
Depth 51 cm (20")
Weight 21 kg (46 lbs)
X-Axis 81.8 cm (32.2")
Y-Axis 27.0 cm (10.6")
*allow additional space for cables



www.IetLtd.com Proudly serving laboratories worldwide since 1979

CALL +847.913.0777 for Refurbished & Certified Lab Equipment